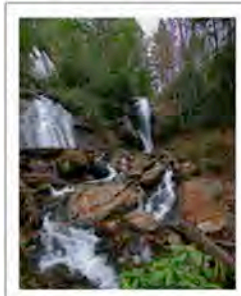


Life in Athens



IDEAL LOCATION AND CLIMATE:

Tucked in the hills of North Georgia, Athens is a classic university town located near the Blue Ridge and Great Smoky Mountains, and the Atlantic Coast. With Atlanta just one hour away, students can conveniently take advantage of a major international city while enjoying the easy pace

of life in Athens. Just a short drive to the foothills of the Appalachian Mountains or the beaches of the Georgia coast, many great outdoor activities including camping, hiking to waterfalls and biking can be enjoyed in the Athens area. Athens enjoys a comfortable climate year-round with long spring and fall seasons and a mild winter.

GREAT SOCIAL SCENE: Home to a thriving local music scene that has produced national acts including REM, Widespread Panic and many others, Athens boasts a broad range of musical opportunities — from the alternative/pop bands that entertain at the pubs and taverns of its downtown area to the Broadway shows and symphony orchestras that play at the newly-built Classic Center. In 2003, Rolling Stone magazine named Athens the #1 College music scene. Athens is also home to many outdoor festivals (such as AthFest) and activities like the Twilight Criterium (a one-of-a-kind nighttime bicycle race).



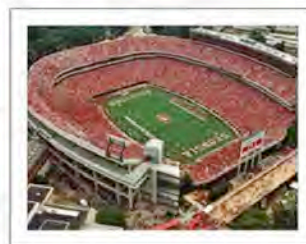
AFFORDABLE LIVING:

Athens is not only a beautiful place to live but also an affordable one. With quality apartments and homes to rent for just a few hundred dollars a month, your monthly salary will go further in Athens than in other metropolitan areas. Many of the apartments are conveniently



located near the downtown area of Athens and are within walking distance to the University.

BIG TIME SPORTS: Part of the Southeast Conference (SEC), the University of Georgia is home to many nationally ranked college sports teams. The culture and excitement of SEC college football can be enjoyed each fall in Athens as scores of fans convene at Sanford Stadium to support the Georgia Bulldogs. UGA holds nine NCAA championships including numerous SEC championships. Women's sports program is consistently ranked among the top five in the country and UGA has twice finished in the top three in recent Sears Cup competition, which ranks the best collegiate sports programs.



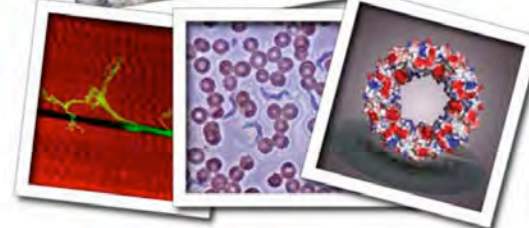
For More Information on
Life in Athens Visit:
www.bmb.uga.edu/athens

The University of Georgia, a unit of the University System of Georgia, is an Equal Opportunity/Affirmative Action institution. The University does not discriminate with respect to employment or admission on the basis of race, color, age, sex, religion, national origin, disability or veteran status.

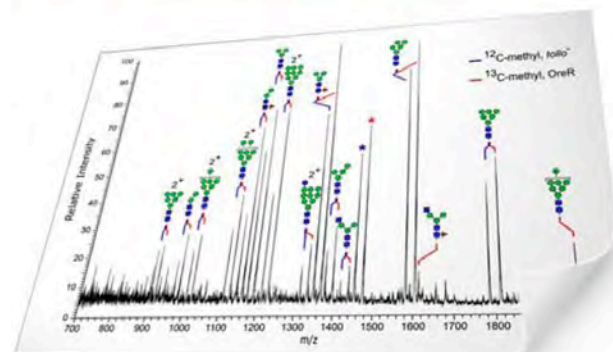
If you need assistance in order to obtain this brochure in an alternative format, please contact the BCMB department at gradcoordinator@bmb.uga.edu or 706-542-1730.

DEPARTMENT OF Biochemistry & Molecular Biology

1785
THE UNIVERSITY OF GEORGIA



WWW.BMB.UGA.EDU



OUR GRADUATE PROGRAM

The Department of Biochemistry & Molecular Biology at the University of Georgia fosters a diversified research-based graduate program, which offers you:

- A PhD degree in 4-6 years that is sought out by employers in academia, industry, governmental agencies, and other job sectors.
- Choice of over 50 labs in a variety of disciplines.
- Full stipend, tuition waivers, and University Health Care plans.
- Various fellowship programs.



OUR AREAS OF RESEARCH EXPERTISE

Cancer / Signal Transduction
Development / Stem Cell Biology
Disease Mechanisms
Medical Biochemistry / Infectious Disease
Enzymology / Metalloenzyme Chemistry
Extremophiles
Glycobiology
Nucleic Acid Biochemistry / Gene Expression
Plant Biochemistry / Biofuels
Proteomics / Genomics / Bioinformatics
Structural Biology / Physical Biochemistry



OUR STATE OF THE ART RESEARCH CENTERS

The **BIOMEDICAL HEALTH SCIENCES INSTITUTE** and promotes interdisciplinary research in biomedical sciences.

The **CANCER CENTER** promotes research and education for diagnosis, treatment, and prevention of cancer.

The **CENTER FOR METALLOENZYME STUDIES** explores the role of metals in biology.

The **COMPLEX CARBOHYDRATE RESEARCH CENTER** studies the role of oligosaccharides as they pertain to organismal function.

The **DOE BIOENERGY RESEARCH CENTER** aims to achieve revolutionary advances in producing next generation fuels.

The **GEORGIA X-RAY CRYSTALLOGRAPHY CENTER** investigates structure-function relationships in biological macromolecules.

The **INSTITUTE OF BIOINFORMATICS** provides resources in genomics, proteomics and glycomics.

The **PLANT CENTER** is focused on plant development, genome organization and crop improvement.

The **SOUTHEAST COLLABORATORY FOR HIGH-FIELD BIOMOLECULAR NMR** develops and applies new methods for biomolecular studies.

The **SOUTHEAST COLLABORATORY FOR STRUCTURAL GENOMICS** develops high throughput strategies for structure determination.



HOW TO APPLY?

To be fully considered for admission please **apply online in the month of December**. Our department has a competitive admissions process, with students being typically admitted into the graduate program during the Fall term. Prior research experience is recommended but not required. A guide to the admissions process can be found at <http://www.bmb.uga.edu/home/prospective/graduate.htm>.

Questions? Visit <http://www.bmb.uga.edu>, email us at gradcoordinator@bmb.uga.edu, or call 706-542-1730. General information about the University of Georgia Graduate School can be found at <http://www.ugagradschool.com>.

Learn more: <http://www.bmb.uga.edu/home/prospective/graduate.htm>